



# Luce County

## 2020 ANNUAL REPORT

### BY THE NUMBERS



2 Extension professionals based in the county, 50+ providing educational opportunities



\$623,514 total economic impact in Luce County



255 youth involved in 4-H, early childhood or after school enrichment



1 affiliated clinical site



\$3,305 spending with local business



66 alumni (bachelor and graduate degree)



MSU disbursed \$171,395 in financial aid to county students

100+

MSU Extension serving Luce County over 100 years

### MESSAGE FROM THE DISTRICT DIRECTOR

Once again I am delighted to share the results of another successful year of partnership between Luce County and Michigan State University (MSU) Extension. Because of your continued support, we've been able to make a difference in the lives of youth, families, businesses, and communities.



MSU Extension offers a broad range of research-based educational services to County residents. Over this past year, we've empowered families and individuals to live healthier lives, supported new and local businesses, created opportunities for youth leadership development and career exploration, helped farmers with business management and mental health, and much more. Our staff live and work alongside County residents, are rooted in community relationships and are responsive to community needs.

Again this year, we've welcomed Luce County residents into our online community: we've offered online educational courses, answered questions on topics ranging from gardening to food safety, raised program awareness through social media, and provided a library of research-based resources they've browsed on our website.

Our partnership with you makes this all possible. On behalf of the MSU Extension team serving Luce County, thank you for another great year. We look forward to your continued support and hope you'll be able to join us during one of our upcoming programs.

Erin Daines, District 2 Director



## LUCE COUNTY

### **Additional MSU Extension Reach**

- Michigan State University Extension staff have been actively serving the residents of Luce County.
- Services from across all reaches of Extension are accessible because of the Gold Standard commitment Luce County has made with Michigan State University Extension.
- Luce County residents are able to access services in the areas of Agriculture & Agribusiness; Children and Youth; Community, Food and Environment; and Health and Nutrition.

**253**

Luce County Residents Served

**80**

# of Programs Luce County Residents Attended



# LUCE COUNTY

## MSU Extension Reach Breakdown

**80**

Programs Luce County  
Residents Attended

**4**

Agriculture &  
Agribusiness  
Programs

**29**

Community, Food &  
Environment  
Programs

**195**

Children &  
Youth  
Programs

**182**

Health &  
Nutrition  
Programs

# Program Highlights

---

## READ, CREATE, INSPIRE ALTERNATE VIRTUAL PROGRAMMING

Program Coordinators Jessica Price (Luce Co) and Maggie Merchberger (Chippewa Co) teamed up with AmeriCorps STEAM member Ashley Freed to offer this EUP Virtual Book and Craft club. The three of them met multiple times, working together to plan the program. The program was held once per week for 6 weeks. Each staff member took the lead in reading a story and leading a craft project twice and offered assistance when they were not the lead.



## SCIENCE FRIDAYS ALTERNATE VIRTUAL PROGRAM

Success Story/Favorite Quote:

After one of Ashley Freed's science Friday meetings, a young girl stayed on afterwards to tell us how much she loved today's lesson, she said, '**the leaf experiment was fascinating!**'. Her joy, participation, and excitement shown throughout the entire program, and even extended onto the private Facebook program page.



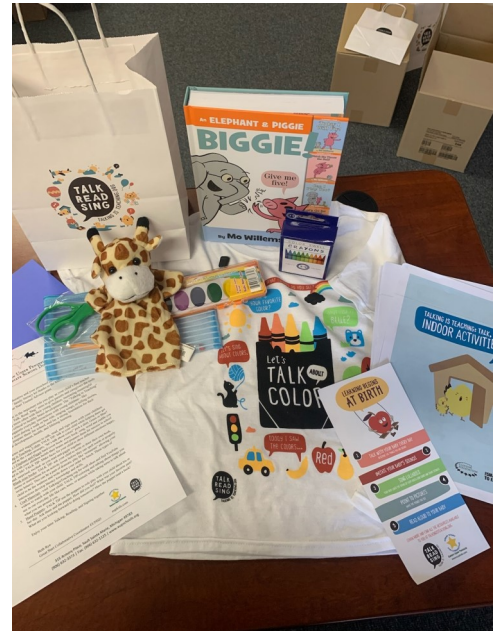


# Program Highlights

---

## TALKING IS TEACHING

The Talking is Teaching preschool kits were an idea that was in process for quite some time. The Great Start Collaborative of the EUP was awarded a significant grant to promote the Talking is Teaching campaign across our region. The kits were decided on as a way to put books and literacy materials in the hands of youth and families that need it most, preschool-aged learners. Jessica Price's role in the kits was to help develop the materials that would ultimately go into the kits, including: books, supplemental activities and materials, learning guides, and more.



## 4-H STAY HOME, STAY SAFE

Created and distributed 100 4-H 'goodie bags' through Tahquamenon Area Schools food distribution site. Bags included science activities, hand sanitizer, crayons, coloring pages, etc.



## FAMILY LITERACY

A Family Literacy event was offered as a combination of both of Jessica Price's roles as 4-H Program Coordinator and Great Start Parent Liaison. This was offered in partnership with Tahquamenon Area Library. Other agencies that participated included MI DNR, Head Start, EUP ISD at the Tahquamenon Area Library. There were 32 participants.



# Investing in Luce County Youth with 4-H

*According to research completed by the Institute for Applied Research in Youth Development at Tufts University, 4-H'ers are **4X** more likely to make contributions to their communities, **2X** more likely to be civically active, and **2X** more likely to make healthier choices.*



Over the course of the COVID-19 Pandemic, 4-H Program Coordinator, Jessica Price has worked exclusively from home. During those 12 months she has engaged nearly **400 youth locally and across the state in 38 programs totaling over 100 hours** of youth reached. Price had this to say about her year of virtual programming, “Like many, I agree that virtual clubs and programs just aren’t the same as in-person. However, I do believe that they are valuable in their own right. I have built connections with youth, families and partners. I have learned that there are many ways to connect, that there is value to virtual programming when it is done well, and that there is a need to be diverse in the way we offer programming moving forward.”

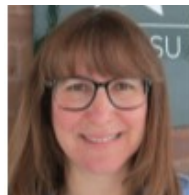
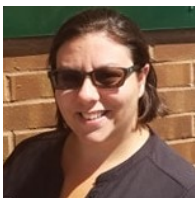
One of the programs Jessica worked on was the development of the **4-H Jedi Training Club**. This club focused on the principles of **mindfulness, physical activity, and building good character through the lens of Star Wars**. Over the course of the year, many youth engaged in the program, and it’s sequel **4-H Jedi Masters**. The feedback from the programs was overwhelming positively. Below is a glimpse of some of the comments received from youth and their parents.

“Best online experience we have had to date.” “The activities have been a great blend of fun film clips, age-appropriate discussion, challenging trivia, light saber movement and Jedi-style mindfulness. This has really been a silver lining in our quarantine experience. Thank you! Can't wait for the next one!” “My son really needed this interaction with like minded kids who have the same interests and thank you for allowing the open discussion afterwards. . .He hasn't been this excited in WEEKS!”

Michigan State University Extension helps people improve their lives by bringing the vast knowledge resources of MSU directly to individuals, communities, and businesses. For more than 100 years, MSU Extension has helped grow Michigan’s economy by equipping Michigan residents with the information they need to do their jobs better, raise healthy and safe families, build their communities, and empower their children to dream of successful futures. For more information about the programs we offer please refer to the contact information below.

**LUCE COUNTY MSU EXTENSION STAFF**

|   |                  |
|---|------------------|
| Ashley Freed, 4-H STEAM Corp Member                               | freedash@msu.edu |
| Adam Ingrao, Ext Specialist, Veterans Liaison/Ag Entomologist     | ingroad@msu.edu  |
| Cheryl Powell, Secretary  | powellc@msu.edu  |
| Jessica Price, 4-H Program Coordinator/Great Start Parent Liaison | brown130@msu.edu |



**CONTACT**



Luce County  
MSU Extension  
14126 County Rd. 428 (physical)  
P.O. Box 48 (mailing)  
Newberry, MI 49868



906-293-3203



msue.msu.edu  
msue.luce@county.msu.edu



MSU Extension Upper Peninsula



@MSUExtension

MSU is an affirmative-action, equal-opportunity employer, committed to achieving excellence through a diverse workforce and inclusive culture that encourages all people to reach their full potential. Michigan State University Extension programs and materials are open to all without regard to race, color, national origin, gender, gender identity, religion, age, height, weight, disability, political beliefs, sexual orientation, marital status, family status or veteran status. Issued in furtherance of MSU Extension work, acts of May 8 and June 30, 1914, in cooperation with the U.S. Department of Agriculture. Jeffrey W. Dwyer, Director, MSU Extension, East Lansing, MI 48824. This information is for educational purposes only. Reference to commercial products or trade names does not imply endorsement by MSU Extension or bias against those not mentioned. The 4-H Name and Emblem have special protections from Congress, protected by code 18 USC 707.